

OMNI WiFi 6 lite

AX1500 WiFi 6 Mesh System

Quick Installation Guide



Jensen
OF SCANDINAVIA

Ved hjelp av LED lampen på Omni WiFi 6 lite kan du se status på tilkoblingen med mere. Se komplett manual for mer informasjon om LED.

■ Grønn	God forbindelse
■ Gul	Middels forbindelse
■ Rød	Ingen forbindelse

Trenger du mer hjelp?

En komplett manual og informasjon om support finner du på vår hjemmeside www.jensenscandinavia.com

Useful information

To fully utilize your Omni WiFi 6 lite system, we recommend reading the complete manual available at www.jensenscandinavia.com. Here, you will find detailed information on installation, configuration, and usage of the system to ensure optimal performance.

Our website also offers a comprehensive support section with answers to frequently asked questions, troubleshooting tips, and contact information.

Värdefull information

För att fullt utnyttja ditt Omni WiFi 6 lite-system rekommenderar vi att du flyttar den kompletta manualen som finns tillgänglig på www.jensenscandinavia.com. Här hittar du detaljerad information om installation, konfiguration och användning av systemet för att säkerställa optimal prestanda.

Vår webbplats erbjuder också en omfattande supportavdelning med svar på vanliga frågor, felsöknings tips och kontaktinformation.

Værdifuld information

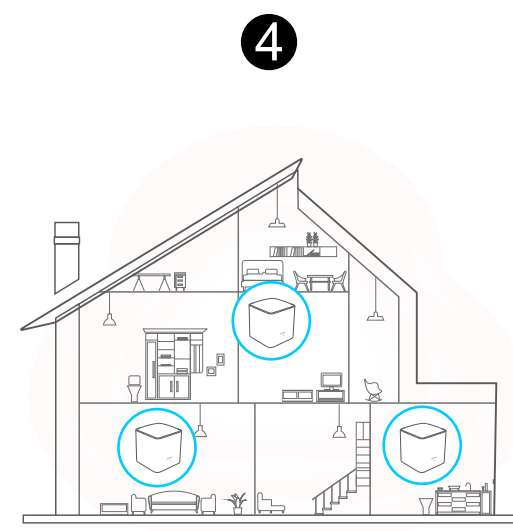
For at udnytte dit Omni WiFi 6 lite-system fuldt ud, anbefaler vi at læse den komplette manual, som er tilgængelig på www.jensenscandinavia.com. Her vil du finde detaljeret information om installation, konfiguration og brug af systemet for at sikre optimal ydeevne.

Vores hjemmeside tilbyder også en omfattende supportsektion med svar på ofte stillede spørgsmål, fejlfindingstips og kontaktinformation.

Arvokasta tietoa

Jotta voit hyödyntää Omni WiFi 6 lite -järjestelmäsi täysin, suosittelemme lukemaan täydellisen käyttöoppaan, joka on saatavilla osoitteessa www.jensenscandinavia.com. Sieltä löydät yksityiskohtaista tietoa järjestelmän asentamisesta, konfiguroinnista ja käytöstä varmistaaksesi optimaalisen suorituskyvyn.

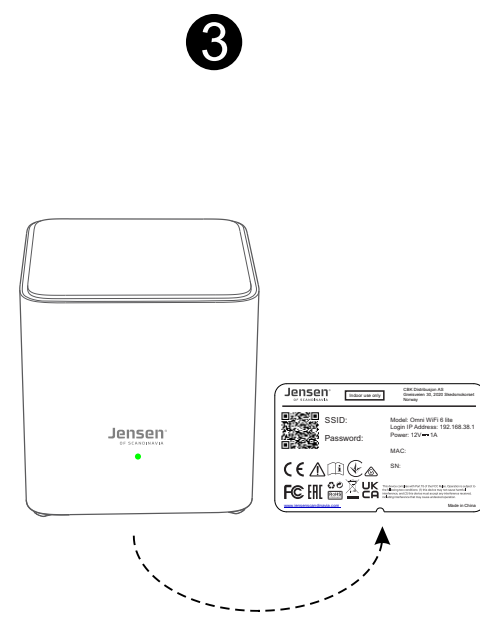
Verkkosivustomme tarjoaa myös kattavan tukiosion, jossa on vastauksia usein kysytyihin kysymyksiin, vianmääritysvinkkejä ja yhteystietoja.



Koble til og plasser de andre Omni WiFi 6 lite nodene.

Når første node er ferdig satt opp, kan du koble til strøm på de resterende Omni WiFi 6 lite nodene. Vi anbefaler at du plasserer noden midt i mellom første node og det området du vil ha dekning. Plasser de i et åpent område for best ytelse.

Ditt Omni WiFi 6 lite mesh system er nå klart! Nå kan du nyte en sømløs og pålitelig internettforbindelse for alle dine trådløse enheter.



Oppsett av Omni WiFi 6 lite

Koble din enhet (PC/telefon) til Omni WiFi 6 lite sitt trådløse nettverk. Navn (SSID) og passord til det trådløse nettverket finner du på undersiden. Du kan også skanne QR koden for å koble til.

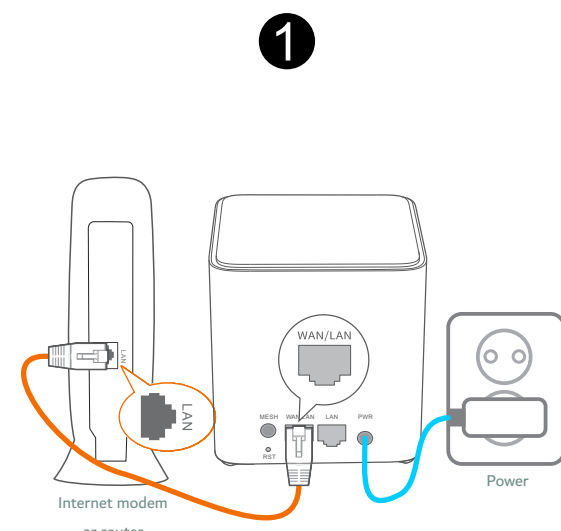
Start Jensen WiFi appen og følg veiledningen for å fullføre oppsettet av den første Omni noden.



Installer Jensen WiFi appen

Last ned Jensen WiFi appen til din smarttelefon/nettbrett ved å søke etter **Jensen WiFi** i App Store eller Google Play.

Du kan også skanne QR koden øverst på dette arket.



Koble første Omni WiFi 6 lite node til internett

- Koble fra strøm på ditt internett modem. Info: Internett modemet er boksen som gir deg internett og leveres av din internettleverandør.
- Koble medfølgende nettkabel fra LAN porten på internett modemet til WAN/LAN port på Omni WiFi 6 lite.
- Koble medfølgende strømadapter til stikkontakt og deretter til Omni WiFi 6 lite.
- Koble deretter til strøm på internett modemet og vent i 2 minutter før du fortsetter med neste steg.

Connect the first Omni WiFi 6 lite device to internet

- Power off your internet modem. The Internet modem is the box which is usually provided by your internet service provider.
- Connect the enclosed Ethernet cable from the LAN port on your internet modem to the WAN/LAN port on your Omni WiFi 6 lite device.
- Connect the enclosed power adapter to a power outlet and then to the Omni WiFi 6 lite.
- Power on your internet modem and wait a few minutes for the modem to boot before move to the next step.

Install Jensen WiFi app

Download and install the Jensen WiFi app to your mobile device by searching for **Jensen WiFi** in App Store or Google Play, or by scanning the QR code on the top of this page.

Setup the Omni WiFi 6 lite

Connect your device (PC/phone) to the Omni WiFi 6 lite wireless network. The name (SSID) and password of the wireless network are printed on the bottom of the device. You can also connect by scanning the QR code.

Start the Omni WiFi app and follow the on-screen instructions to complete the setup.

Connect and place the other Omni WiFi 6 lite devices

Once the first node is fully set up, it's time to connect the remaining Omni WiFi 6 lite nodes to power. Place them midway between the first Omni WiFi 6 lite node and the area where you want coverage. Position them in an open area for optimal performance.

■ Green	Good connection
■ Yellow	Fair connection
■ Red	Disconnected

The LED light will show the connection status approximately 1 minute after you connect the node to power. Please see the full manual for more LED options.

If the LED does not get solid green we recommend you to move it closer to another Omni WiFi 6 lite node to get better connection.

Your Omni WiFi 6 lite Mesh system is now ready and you can enjoy seamless and reliable internet connection for all your WiFi devices.

Installera Jensen WiFi-appen

Ladda ned och installera Jensen WiFi-appen till din smarta telefon/surfplatta genom att söka efter **Jensen WiFi** i App Store eller Google Play eller genom att skanna QR koden överst på denna sida.

Konfigurera Omni WiFi 6 lite

Koppla din enhet (PC/telefon) till Omni WiFi 6 lite:s trådlösa nätverk. Namn (SSID) och lösenord till det trådlösa nätverket hittar du på undersidan av enheten. Du kan också skanna QR-koden för att ansluta.

Starta Omni WiFi-appen och följ instruktionerna i appen för att slutföra konfigurationen och anslutningen till internet.

Anslut och placera de återstående Omni-enheterna

Når den första noden är færdig inståld er det dags att ansluta strøm til de återstående Omni WiFi 6 lite-noderna. Placera dem på mitten mellan den första Omni WiFi 6 lite-noden och det område där du vill ha tåkning. Positionera dem i ett åppet område for optimal prestanda.

■ Grønt	Bra signal
■ Gult	Medelgod signal
■ Rødt	Inte ansluten

LED-lampen visar anslutningsstatusen cirka 1 minut efter att du har ansluttit noden til strømmen. Se den fullstændige manualen for fler LED-alternativ.

Om LED-lampen inte lyser grønt, anbefaler vi, at du flytter Omni-enheten nærmere ån de andre Omni-enheterna.

Ditt Omni WiFi 6 lite Mesh-system er nu klart for anvænding och du kan se fram emot en smidig och tillförlitlig internetanslutning for alla dina WiFi-enheter.

Installation af Jensen-appen

Hent og installer Jensen WiFi-appen på din smartphone/tablet ved at søge efter **Jensen WiFi** i App Store eller Google Play eller ved at skanne QR-kode øverst på dette ark.

Konfiguration af Omni WiFi 6 lite

Tilslut din enhed (PC/telefon) til Omni WiFi 6 lite's trådløse netværk. Du kan finde navn (SSID) og adgangskode til det trådløse netværk på undersiden af enheden. Du kan også skanne QR-koden for at oprette forbindelse.

Start Jensen WiFi app og følg vejledningen for at fuldføre konfigurationen og oprette forbindelse til internettet.

Tilslutning og placering af de resterende Omni-enheder

Når den første node er færdig konfigureret, er det tid til at tilslutte strøm til de resterende Omni WiFi 6 lite-noder. Placer dem midt imellem den første Omni WiFi 6 lite-node og det område, hvor du ønsker dækning. Positionér dem i et åbent område for optimal ydeevne.

■ Grønt lys	Godt signal
■ Gult lys	Medium signal
■ Rødt lys	Ikke tilsluttet

LED-lampen viser forbindelsesstatusen cirka 1 minut efter du har tilsluttet noden til strøm. Se venligst den komplette manual for flere LED-funksjoner.

Hvis LED-lampen ikke lyser grønt, anbefaler vi, at du flytter Omni-enheden tættere på en af de øvrige Omni-enheder.

Dit Omni WiFi 6 lite Mesh-system er nu klar til brug, og du kan nyde en problemfri og pålidelig internetforbindelse på alle dine wifi-enheder.

Jensen WiFi -sovelluksen asentaminen

Lataa ja asenna Jensen WiFi -sovellus mobiililaitteeseesi. Hae **Jensen WiFi** App Storesta tai Google Play -kaupasta tai skanna QR-koodi.

Omnin WiFi 6 lite asetusten tekeminen

Yhdistä laitteesi (PC/puhelin) Omni WiFi 6 lite langattomaan verkkoon. Löydät langattoman verkon nimen (SSID) ja salasanan laitteen alapuolelta. Voit myös skannata QR-koodin muodostaaksesi yhteyden.

Käynnistä Jensen WiFi -sovellus ja noudata ohjeita viimeistellläksesi ensimmäisen Omni-solmun asetukset.

Muiden Omni-laitteiden yhdistäminen ja sijoitteleminen

Kun ensimmäinen solmu on asennettu, on aika kytkeä virta jäljellä oleviin Omni WiFi 6 lite -solmuihin. Sijoita ne puoliväliin ensimmäisen Omni WiFi 6 lite -solmun ja alueen välille, johon haluat kattavuutta. Aseta ne avoimeen tilaan optimaalisen suorituskyvyn varmistamiseksi.

LED-valo näyttää yhteyden tilan noin minuutin kuluttua siitä, kun olet kytkenyt solmun virtalähteeseen. Lisätietoja LED-valojen eri merkityksistä löydät käyttöoppaasta.

■ vihreä	Hyvä yhteys
■ Keltainen	Melko hyvä yhteys
■ Punainen	Yhteys katkaistu

Jos Omnin LED ei ole vihreä, kannattaa siirtää se lähemmäksi toista Omnia, niin yhteys paranee.

Omni WiFi 6 lite Mesh -järjestelmäsi on nyt valmis ja voit käyttää saumatonta ja luotettavaa internet-yhteyttä kaikilla WiFi-laitteilla.

Frequently asked questions

1. The speed I get from my Omni WiFi 6 lite system is not as expected.
The speed you receive from the Omni WiFi 6 lite depends on various factors, including node placement, interference from other WiFi networks, distance, the performance of your WiFi clients and more... Please see the full user manual at www.jensenscandinavia.com for more information and useful tip.

2. How do I modify the WiFi name and password for my Omni wireless network?
Open the Jensen WiFi app. Select your Omni system, tap settings in the lower right corner, and then tap WiFi Settings. Now you can change the WiFi name and password. Then click Save. After this change you need to reconnect all your client devices using the new WiFi name and password.

3. My Omni WiFi 6 lite system isn't functioning properly.
If your Omni system is not functioning normally, we recommend performing a factory reset followed by a new setup.
-Power on the Omni WiFi 6 lite device and wait 1 minute.
- Then press and hold the RESET button until LED flashes red (after about 10 seconds).
- Repeat this on all your Omni WiFi 6 lite devices.
- Open the Jensen WiFi app and follow the instructions for a new setup.
** Please also see the full user manual at www.jensenscandinavia.com

4. I need better coverage on my Omni WiFi 6 lite system, what should I do?
It is possible to add more Omni WiFi 6 lite nodes to provide better coverage, but this also results in lower speeds, as the nodes share a common bandwidth. Refer to the user manual at www.jensenscandinavia.com for instructions on how to add new Omni WiFi 6 lite devices.

CE Mark Warning
This is a Class B product. In a domestic environment, this product may cause radio interference, in which case the user may be required to take adequate measures. Operations in the 5150 - 5250MHz band are restricted to indoor use only. This equipment should be installed and operated with minimum 20cm between the equipment and your body.

Note: 1. The manufacturer is not responsible for any radio and TV interference caused by unauthorized modifications to this equipment.
2. To avoid unnecessary radiation interference, it is recommended to use shielded network cable.

Declaration of conformity
Hereby, CBK Distribusjon AS declares that the radio equipment type Omni WiFi 6 lite is compliant with RED (Radio Equipment Directive) 2014/53/EU. CE documentation are available at www.jensenscandinavia.com



This product bears the selective sorting symbol for Waste electrical and electronic equipment (WEEE). This means that this product must be handled pursuant to European directive 2012/19/EU in order to be recycled or dismantled to minimize its impact on the environment. User has the choice to give his product to a competent recycling organization or to the retailer when he buys new electrical or electronic equipment.

	BE	BG	CZ	DK	DE	EE	IE	EL	ES	FR	HR	IT	CY	LV
	LT	LU	HU	MT	NL	AT	PL	PT	RO	SI	SK	FI	SE	UK

Operate Frequency:
2.4 GHz: EU/2412-2472MHz (CH1-CH13)
5 GHz: EU/5150-5250MHz (CH36-CH48)
EIRP Power (Max):
2.4 GHz: 20dBm
5 GHz: 23dBm
Software version: V16.03.20.21
Input: 100-240V AC, 50/60 Hz
Output: 12V DC 1A

Operating Environment
Temperature 0°C - 40°C
Humidity:10%-90% RH, non-condensing

Usage restrictions
The Omni WiFi 6 lite system is intended for indoor use only.

Address: CBK Distribusjon AS
Gneisveien 30
2020 Skedsmokorset, Norway

Jensen
OF SCANDINAVIA
www.jensenscandinavia.com



Copyright © 2024 JensenScandinavia . All rights reserved



Innhold i pakken

- * Omni WiFi 6 lite x 3
- * Strømadapter x 3
- * Nettkabel x 1
- * Hurtigguide x 1



Package content

- * Omni WiFi 6 lite x 3
- * Power adapter x 3
- * Ethernet cable x 1
- * Quick Installation Guide x 1



Förpackningens innehåll

- * Omni WiFi 6 lite x 3
- * Strömadapter x 3
- * Nätverkskabel x 1
- * Snabbguide x 1



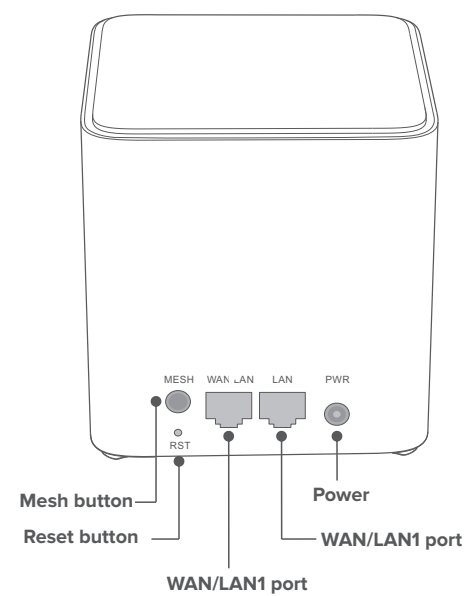
Pakkens indhold

- * Omni WiFi 6 lite x 3
- * Strømadapter x 3
- * Netværkskabel x 1
- * Kvikguide x 1



Pakkauksen sisältö

- * Omni WiFi 6 lite x 3
- * Virtalähde x 3
- * Ethernet-kaapeli x 1
- * Asennusohje x 1



Frequently asked questions

1. The speed I get from my Omni WiFi 6 lite system is not as expected.
The speed you receive from the Omni WiFi 6 lite depends on various factors, including node placement, interference from other WiFi networks, distance, the performance of your WiFi clients and more... Please see the full user manual at www.jensenscandinavia.com for more information and useful tip.

2. How do I modify the WiFi name and password for my Omni wireless network?
Open the Jensen WiFi app. Select your Omni system, tap settings in the lower right corner, and then tap WiFi Settings. Now you can change the WiFi name and password. Then click Save. After this change you need to reconnect all your client devices using the new WiFi name and password.

3. My Omni WiFi 6 lite system isn't functioning properly.
If your Omni system is not functioning normally, we recommend performing a factory reset followed by a new setup.
-Power on the Omni WiFi 6 lite device and wait 1 minute.
- Then press and hold the RESET button until LED flashes red (after about 10 seconds).
- Repeat this on all your Omni WiFi 6 lite devices.
- Open the Jensen WiFi app and follow the instructions for a new setup.
** Please also see the full user manual at www.jensenscandinavia.com

4. I need better coverage on my Omni WiFi 6 lite system, what should I do?
It is possible to add more Omni WiFi 6 lite nodes to provide better coverage, but this also results in lower speeds, as the nodes share a common bandwidth. Refer to the user manual at www.jensenscandinavia.com for instructions on how to add new Omni WiFi 6 lite devices.

CE Mark Warning
This is a Class B product. In a domestic environment, this product may cause radio interference, in which case the user may be required to take adequate measures. Operations in the 5150 - 5250MHz band are restricted to indoor use only. This equipment should be installed and operated with minimum 20cm between the equipment and your body.

Note: 1. The manufacturer is not responsible for any radio and TV interference caused by unauthorized modifications to this equipment.
2. To avoid unnecessary radiation interference, it is recommended to use shielded network cable.

Declaration of conformity
Hereby, CBK Distribusjon AS declares that the radio equipment type Omni WiFi 6 lite is compliant with RED (Radio Equipment Directive) 2014/53/EU. CE documentation are available at www.jensenscandinavia.com



This product bears the selective sorting symbol for Waste electrical and electronic equipment (WEEE). This means that this product must be handled pursuant to European directive 2012/19/EU in order to be recycled or dismantled to minimize its impact on the environment. User has the choice to give his product to a competent recycling organization or to the retailer when he buys new electrical or electronic equipment.

	BE	BG	CZ	DK	DE	EE	IE	EL	ES	FR	HR	IT	CY	LV
	LT	LU	HU	MT	NL	AT	PL	PT	RO	SI	SK	FI	SE	UK

Operate Frequency:
2.4 GHz: EU/2412-2472MHz (CH1-CH13)
5 GHz: EU/5150-5250MHz (CH36-CH48)
EIRP Power (Max):
2.4 GHz: 20dBm
5 GHz: 23dBm
Software version: V16.03.20.21
Input: 100-240V AC, 50/60 Hz
Output: 12V DC 1A

Operating Environment
Temperature 0°C - 40°C
Humidity:10%-90% RH, non-condensing

Usage restrictions
The Omni WiFi 6 lite system is intended for indoor use only.

Address: CBK Distribusjon AS
Gneisveien 30
2020 Skedsmokorset, Norway

Jensen
OF SCANDINAVIA
www.jensenscandinavia.com



Copyright © 2024 JensenScandinavia . All rights reserved